



Leading stockholder and distributor of

Pipes, Fittings, & Valves
Steel & Non-ferrous Metals



Reliable

Quality

Service

www.ashfieldsteel.co.uk



About us

Mission Statement

From small independent fabricators to larger multinational corporations, we aim to offer reliable, quality, service regardless of your industry.

"Your partner to a better supply chain."

Reliable

Ashfield Steel Limited pride ourselves on building strong , long lasting relationships with our customers, ensuring that we deliver our promise to you of transparency, honesty and reliability.

Quality

Certification and traceability are a fundamental part of our business and through our quality system we ensure that our processes and manufacturers share the same vision.

Service

Being based in the East Midlands gives us direct access to transport networks, ensuring we are able to meet demands for site deliveries across the UK, through our own managed delivery fleet. Our robust approach provides value through consistently high level service.

Pipeline



Pipe

Carbon Steel
Stainless Steel

ASTM A106 Grade B
API5L Grade B
ASTM A333
A312 TP316/316L



Flanges

Carbon Steel
Stainless Steel

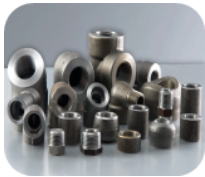
EN1092-1
ASTM A105 N
ASTM A350 F2
A182 F316/316L



Weld
Fittings

Carbon Steel
Stainless Steel

ASTM A234 WPB
ASTM A420 WPL6
A403 WP316L



Forged
Fittings

Carbon Steel
Stainless Steel

ASTM ASME SA105N
ASTM ASME SA182 304L
ASTM ASME SA182 316L



Pipe
Fittings

Steel (Black/Galv)
Stainless Steel
Plastic
Brass

Malleable Iron EN10242
Steel EN10241 (BS1740)
UPVC BS4346 Pt1
ABS BS5392 Pt1
150lb 316, C36000 (Brass)



Pipeline

Tube

Steel
Red Oxide
Galv
Stainless Steel

EN10255 (BS1387)
ASTM A269 304/304L
ASTM A269 316/316L



Handrail
Fittings

Malleable Iron
Ductile Iron

Hot Dipped Galv
Powder Coated



Valves

Carbon Steel
Stainless Steel
Bronze, Brass
Plastic, Cast Iron

Variety of connections
such as Flanged
screwed, compression
socket weld



Support
Systems

Black, Galv, Plastic
Brass, Stainless Steel
BZP, Phenolic

Clips, Pipe Rings
Hangers, Bolts
Fixings, Brackets



Ancillaries

Paints, Sprays
Lubricants, Fluid
Paste

Tools, Brushes,
PPE, Consumables



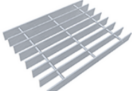


Steelstock

Black Mild
Steel

Round, Square
Flat, Unequal Angle
Angle, T-Section, PFC

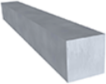
EN10025-2
S275JR, S355JR



Structural
Steel

Universal Beams
& Columns
Reinforcing Bar
& Mesh

EN10025-2
S275JR, S355JR
S355JO, S355J2
BS4449:2005

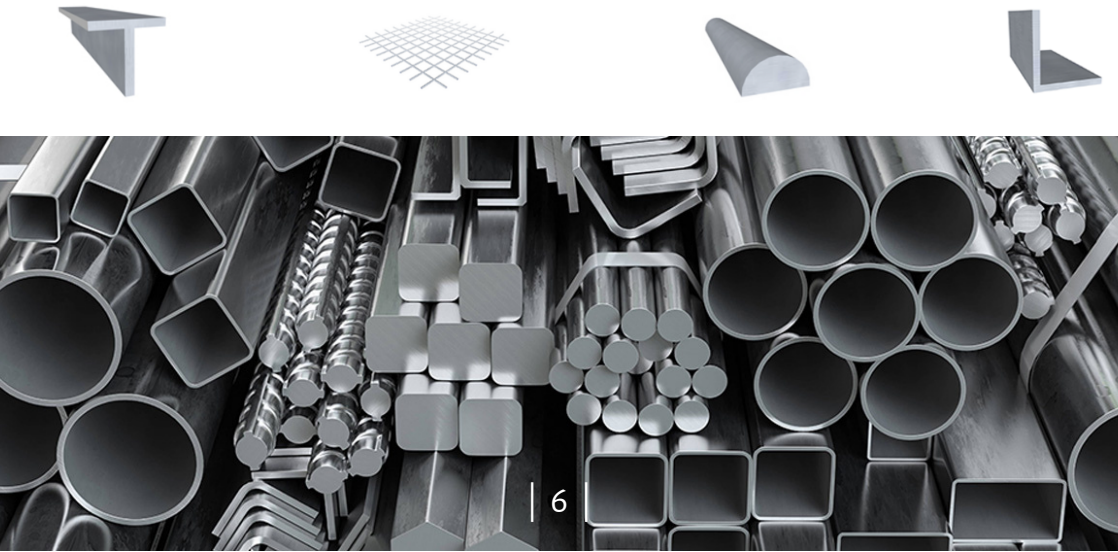


Hollow
Section

Circle, Square
Rectangle

EN10219
EN10210
S235, S355J2H

We are happy to assist with sourcing through our vast supply network, any special grade products that may not be listed above. Please contact our sales team with further details.



Steelstock



Sheet &
Plate

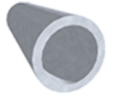
Standard sizes
or cut to specific
dimensions

HR4, DC01, S275JR
S355JR, S355J2

Mesh &
Flooring

Standard sizes
or cut to specific
dimensions

Self Colour, Galv
Stainless Steel



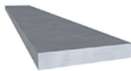
Tube

Cold Drawn Seamless
Hot Finished Seamless
ERW Tube, Round
Square, Rectangle

EN10297-1 E355
EN10210 S355J2H
EN10305-1 E235
EN10216-2 P235GH
EN10305-3 E220



Our products are stocked in a standard length, but we also supply lengths cut to your specific dimensions. Please see our "Services" page for further details and capabilities.



Metals

Aluminium

Grades: 1050, 2011, 2014A, 5083, 6026, 6063, 6082

Shapes: Round bar, Angle, Flat bar, Square bar, Sheet, Plate, Tube, Channel, Box section

Stainless Steel

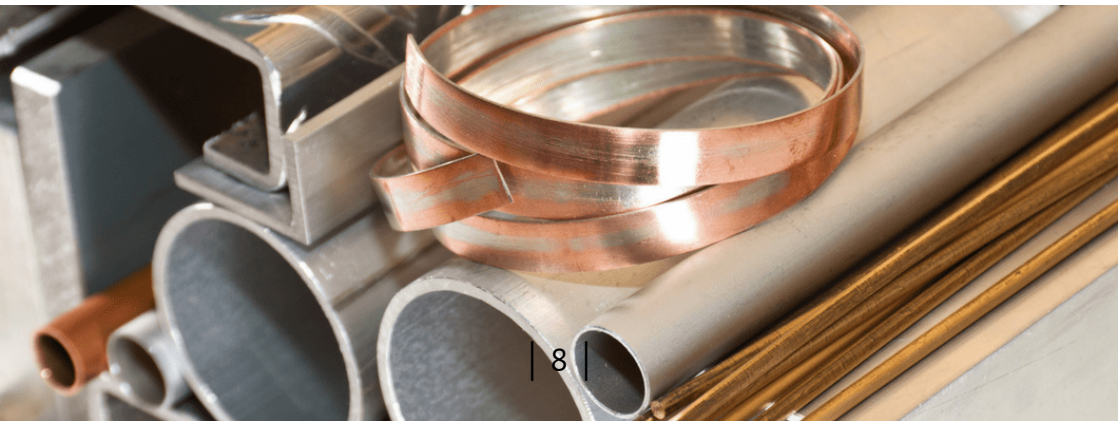
Grades: 303, 304, 316, 321, 416, 431, S32760

Shapes: Round bar, Angle, Flat bar, Square bar, Sheet, Plate, Tube, Channel, Box section, Hexagon

Brass

Grades: CZ106, CZ108, CZ114, CZ121

Shapes: Round bar, Angle, Flat bar, Square bar, Sheet, Tube, Channel, Box section, Hexagon



Metals

Copper

Grades: C101, C106

Shapes: Round bar, Flat bar, Square bar, Sheet, Tube

Engineering Steel

Grades: EN1A, EN19T, EN24T, EN3B, EN8

Shapes: Round bar, Flat bar, Square bar, Hexagon

For further grades, technical information and general enquiries please contact our sales team who will be happy to help.



Your partner to a better supply chain

- **VMI (Vendor Managed Inventory)**
Improving efficiency and reducing your inventory costs. Ashfield Steel can streamline your supply chain process by maintaining required stock levels, reporting on usage and delivering on demand Just-In-Time.
- **Consignment stock**
Improving cash-flow and material lead-times, Ashfield Steel can support your business demands.
- **Warehousing customer's stock**
Extending your own warehousing facilities for more efficient use, Ashfield Steel can meet your requirements to store and deliver on demand or to schedule.
- **Kitting / BOM (Bill Of Materials)**
Saving time and making your purchasing of multiple items more efficient, our "tagged assemblies" allow for multiple parts to be ordered and invoiced as one item.
- **Labelling with customer's part number**
Ensuring to increase the efficiency of your Goods-in, we ensure all items are labelled with your customer part number or job number.
- **Test certificates & material traceability**
Sourcing our stock through an approved, managed supply chain, our materials are traceable to manufacture and come with test certificates.



SUPPLY CHAIN

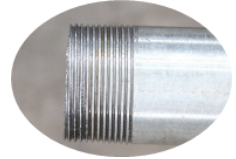
Additional Services



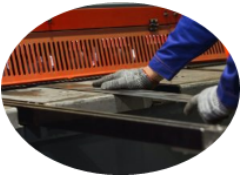
Bandsaw



Profile Cutting



Pipe Threading



Guillotine



Drilling



Press Brake
Folding



Site Deliveries



Painting



Shot Blasting



Galvenizing



Fabricating



Grinding



Unit 3 Hermitage Way, Hermitage Lane Industrial
Estate, Mansfield, Nottinghamshire, NG18 5ES

Tel: +44 (0)1623 372200

E-mail: info@ashfieldsteel.co.uk



www.ashfieldsteel.co.uk

